



NORTH AMERICA PROMOTION

IGNITE

YOUR  
*business*

**Earn Cash Rewards and Prizes**  
*Rapid Growth = Rapid Rewards*



# It's Within Your Reach

## 1 GET STARTED

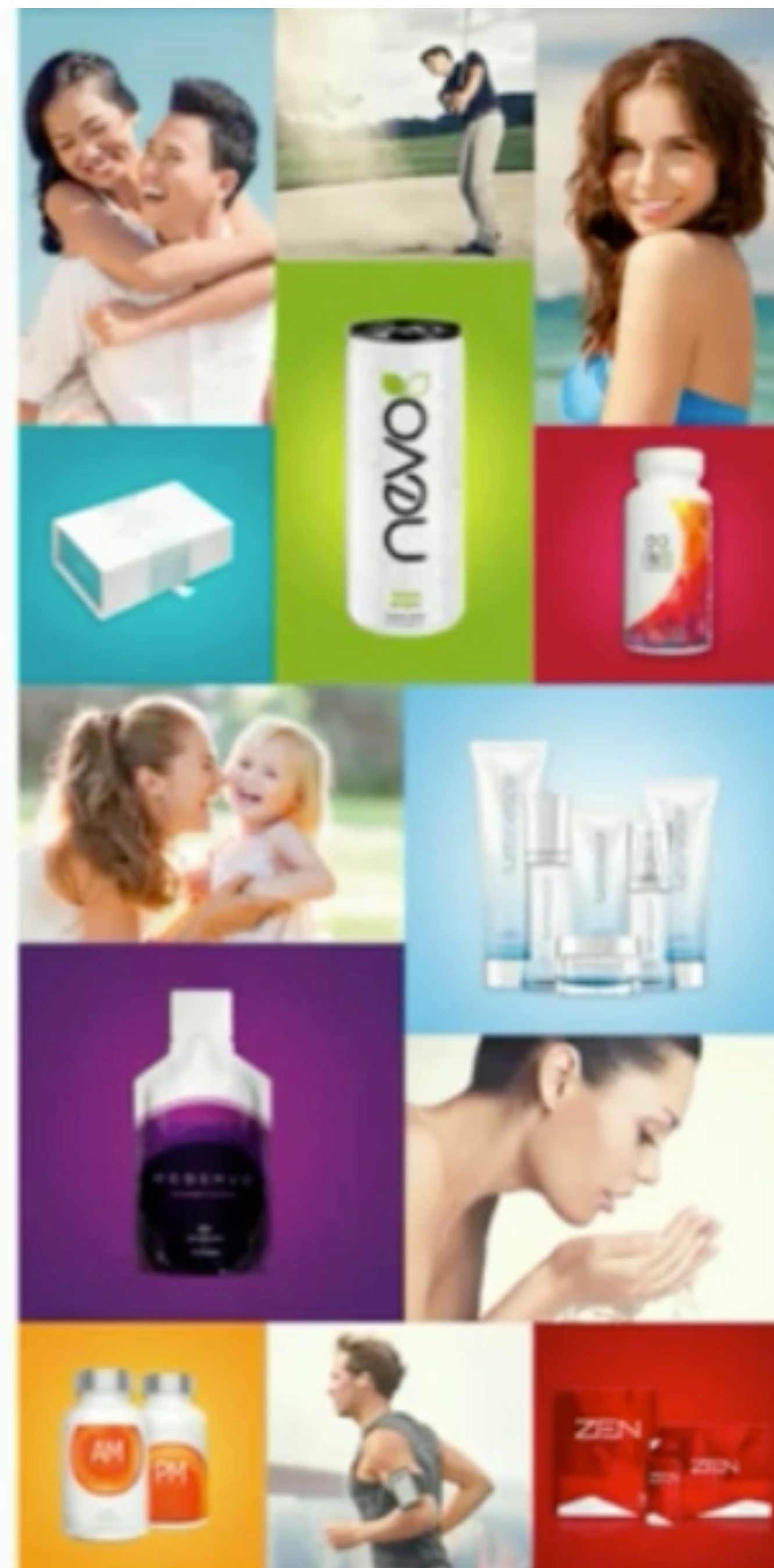
- New Distributors enrolling during the promotion period need purchase a Supreme Package or higher to participate.
- Existing Distributor will need to purchase the Activation Package or the Upgrade to Ambassador Package to participate.
- Existing Distributors who have already purchased a Supreme or higher package, are eligible to participate.

## 2 RANK ADVANCE

for the first time to Executive (QE), Jade (QJ), Pearl (QP) or Sapphire (QS) in the months of May, June or July.

## 3 GENERATE NEW PGV

by sharing the Jeunesse products with friends and family.





New Distributors who enroll during the promotion period  
**will be qualified to get paid:**

**2 levels of matching bonuses for 60 days**  
with the purchase of a Supreme Package,

**3 levels of matching bonuses for 90 days**  
with the purchase of a Jumbo Package, and

**3 levels of matching bonuses for 180 days**  
with the purchase of an Ambassador Package.

Current Distributors can purchase an Upgrade to Ambassador  
Package to get paid 3 levels of matching bonuses for  
**180 days.**



# IGNITE YOUR BUSINESS POTENTIAL CUMULATIVE PAYOUTS

RANK	FIRST 7 DAYS	30 DAYS	60 DAYS	90 DAYS
 EXECUTIVE	<b>\$50 &amp;</b> JNS Expo Branded Travel Portfolio & \$25 bonus credits for product purchase	→ <b>\$25</b>		
 JADE EXECUTIVE	→ <b>\$500 &amp;</b> JNS Expo Branded Backpack		→ <b>\$250</b>	
 PEARL EXECUTIVE	→ <b>\$1,000 &amp;</b> JNS Expo Branded Small Suitcase			<b>\$500</b>
 SAPPHIRE EXECUTIVE	→ <b>\$2,000 &amp;</b> JNS Expo Branded Suitcase			



# IGNITE YOUR BUSINESS POTENTIAL CUMULATIVE PAYOUTS




RANK	FIRST 7 DAYS	30 DAYS	60 DAYS	90 DAYS
 EXECUTIVE	<b>\$50 &amp;</b> JNS Expo Branded Travel Portfolio & \$25 bonus credits for product purchase	<b>up to \$2,775 in CASH BONUSES</b>		
 JADE EXECUTIVE		<b>\$500 &amp;</b> JNS Expo Branded Backpack		<b>\$250</b>
 PEARL EXECUTIVE			<b>\$1,000 &amp;</b> JNS Expo Branded Small Suitcase	<b>\$500</b>
 SAPPHIRE EXECUTIVE				<b>\$2,000 &amp;</b> JNS Expo Branded Suitcase



# HOW IT WORKS

TAKE ACTION TODAY!

**Grow your business and rank advance to earn  
up to \$2,775 in CASH BONUSES**

STEP 1 RANK ADVANCE	STEP 2	DATE TO BE COMPLETED BY	CASH BONUS REWARD EARNED
 EXECUTIVE	Generate 600 new PGV	July 31	\$25
 JADE EXECUTIVE	Generate 3,600 new PGV	July 31	\$250
 PEARL EXECUTIVE	Generate 7,200 new PGV	July 31	\$500
 SAPPHIRE EXECUTIVE	Generate 10,800 new PGV	July 31	\$2,000



# IGNITE YOUR BUSINESS

## POTENTIAL CUMULATIVE PAYOUTS

RANK	FIRST 7 DAYS	30 DAYS	60 DAYS	90 DAYS
 EXECUTIVE	<b>\$50 &amp;</b> JNS Expo Branded Travel Portfolio & \$25 bonus credits for product purchase			<b>\$25</b>
 JADE EXECUTIVE		<b>\$500 &amp;</b> JNS Expo Branded Backpack		<b>\$250</b>
 PEARL EXECUTIVE	<b>Earn EXPO PRIZES and up to \$3,550 CASH</b>		<b>\$1,000 &amp;</b> JNS Expo Branded Small Suitcase	<b>\$500</b>
 SAPPHIRE EXECUTIVE				<b>\$2,000 &amp;</b> JNS Expo Branded Suitcase



Work Fast, Work Hard, and EARN YOUR WAY to an  
**Unforgettable Opportunity!**

Qualify to earn up to  
**\$3,550 in cash bonuses**

Earn EXPO-branded prizes to make your trip to Orlando a truly VIP experience, from a 2-piece luggage set and backpack, to a travel portfolio and bonus credits to spend on your favorite Jeunesse products!

*Photo for reference only.*





Google

PLUS, meet this promotion criteria and  
you'll also have the potential to earn tickets to



**EXPO & Disney World®**

through the Global EXPO Empower Promotion!



# FIRST 30 DAYS **BECOME A JADE**

Double Your Money | Earn Over \$1,000 PLUS prizes



## INVESTMENT

Starter Pack	\$49.95
Supreme Pack	\$495.00
<b>Total Investment</b>	<b>\$549.95</b>

## RETURN ON INVESTMENT

Executive in 7 days	\$50.00
Jade in 30 days	\$500.00
FOB	\$400.00
3 Cycles	\$105.00
2 Matches	\$14.00
<b>Total ROI in 30 days</b>	<b>\$1,069.00</b>

Jeunesse does not guarantee any level of income or earnings to any distributor. Earnings from the Jeunesse Rewards Plan solely depend on sales and each distributor's skill, ability, and personal efforts.

**PLUS** Expo Prizes and  
Travel Points towards Expo



# FIRST 90 DAYS BECOME A SAPPHIRE & EARN MONEY



## YOU CAN EARN

FOB	\$400.00
Sapphire in 90 days	\$2,000.00
+ Cycles and Matching Dollars	
<b>Total</b>	<b>\$2,400.00</b>

**PLUS** Expo Prizes and  
Travel Points towards Expo



# THE FINE PRINT

## DETAILS OF THE PROMOTION

**Offer valid only to legal residents of the United States and Canada. Members must be Active and in good standing with the Company to participate in the offer and when the bonus is paid. Bonuses will be paid to your Joffice™ Wallet in September 2016. One winner per household.**

**The bonuses for this promotion are determined by your qualifying Personal Group Volume (PGV) and by your rank advancement during the promotional period. For the purpose of this promotion only, your qualifying PGV:**

- 1** is volume that is generated throughout your organization, excluding volume created by your upline (spillover);
- 2** excludes your personal volume (from product you or your retail customers purchase); however it does include PGV from monthly Unconditional Autoship orders exceeding the 60 CV monthly qualifier for Active;
- 3** is limited to volume that is "new," meaning that it is generated during the promotional period;

- 4** excludes PGV generated from Autoship orders in your downline;
- 5** excludes event package volume purchased during the promotion;
- 6** is limited in each leg to no more than 30% of the PGV required for the rank bonus (in other words, no more than 30% of the required volume can come from any one enrollment tree leg);
- 7** excludes "blocked" volume — for example, if you are a Distributor working toward achieving the rank of Sapphire during the promotional period and you have a personally sponsored Pearl in your downline also working toward achieving the rank of Sapphire during the promotion, you may count the PGV generated by your personally sponsored Pearls until they achieve the rank of Sapphire (the same holds true for other ranks), and all PGV they generate after they reach Sapphire would be blocked or excluded from your qualifying PGV (note that "blocking" is only applicable for the promotion and does not apply to the Jeunesse Financial Rewards Plan).